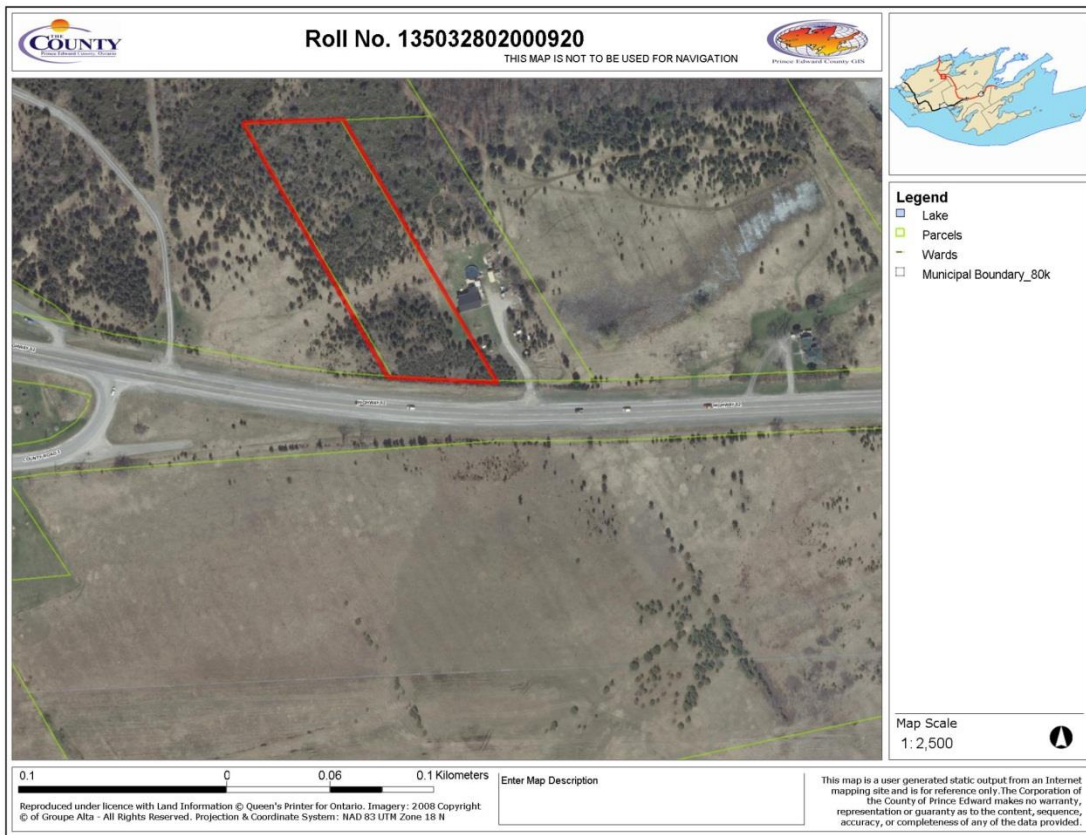


Roll No. 1135032802000920

Specification Sheet



Location: Hwy 62 & Cty Rd 2

Ward: Ameliasburgh

Legal Description: CON 4 PT LOT 66 RP47R 587 PART 2

Dimensions: 180.88 FR 581.00D

Area: 2.01 Acres or 8134.1815m² (per GIS)

Zoned: RR2

Roll Number: 135032802000920

Group: Vacant Lands

For information on:

Prince Edward County Comprehensive Zoning By-law
Prince Edward County Interactive Zoning Map
Prince Edward County Official Plan
Prince Edward County Secondary Plan

Visit:

www.pecounty.on.ca/government/planning_services/planning.php



Community Development Department, 332 Main Street, Picton, ON, K0K 2T0

E: cdd@pecounty.on.ca

T: 613.476.2148